

REGULATIONS

FOR THE

UNIFORM & DRESS

OF THE

MARINE CORPS OF THE UNITED STATES,

OCTOBER, 1859.

From the Original Text and Drawings

IN THE

QUARTER MASTER'S DEPARTMENT.

FIRST EDITION.

PHILADELPHIA:
CHARLES DESILVER,
PUBLISHER AND BOOKSELLER,

No. 714 CHESTNUT STREET.

Entered according to the Act of Congress, in the year 1850,

BY CHARLES DESILVER,

In the Clerk's Office of the District Court of the United States for the Eastern District of Pennsylvania.

UNIFORM AND DRESS

OF THE

UNITED STATES MARINE CORPS.

FULL DRESS.

Coat.

Officers.—All officers shall wear, in full dress, a double-breasted frock coat of dark blue cloth, the skirt to extend three-fourths of the distance from the top of the hip to the bend of the knee.

For the Commandant.—Two rows of large size Marine buttons on the breast, eight in each row, placed in pairs; the distance between each row, five and one-half inches at top, and three and one-half inches at bottom; standing collar, to rise no higher than to permit the chin to turn freely over it; to hook in front at the bottom, and slope thence up and backward at an angle of thirty degrees on each side, making the total opening in front an angle of sixty degrees; two loops of half inch gold lace on each side of the collar, with one small Marine button at the end of each loop; the bottom loop four and one-half inches long, the upper loop not to extend further back than the bottom loop, and the front of both loops to slope up and backward with the front of the collar, at an angle of thirty degrees, (See Plates, Fig. 1;) collar to be edged all around with a scarlet edging; plain round cuff, three inches deep, slash on the sleeve six and one-half inches long, and two and one quarter inches wide at the points, and one and nine-tenths of an inch at the narrowest part of the curve; four loops of half inch gold lace, and four small Marine buttons, one in each loop, on the slash of the sleeve, (See Plates, Fig. 2;) the loops on the sleeve to be two inches long, and one and one-eighth of an inch wide. The slash on the sleeve to be edged with scarlet on the ends and indented edges; pockets, with three-pointed side edges in the folds of the skirt; one button at the hip, one at the centre of the pocket opening, and one at the bottom, making six buttons on the back and skirt of the coat; the side edges to have one point on the centre of the edge, and to curve thence up and down to the top and bottom, corresponding with the slash on the sleeves; the side edges to be edged with scarlet on the ends and indented edges; lining of the coat black.

For Field Officers.—Same as for the Commandant, except that there shall be eight buttons in each row, placed at equal distances.

For Captains.—Same as for field officers, except that there

shall be but three loops of gold lace, and three small Marine buttons on the sleeve, and the slash shortened to correspond with the reduction in the number of loops. (See Plates, Fig. 3.)

For Lieutenants.—Same as for Captains, except that there shall be but two loops and small Marine buttons on the sleeve, and the slash shortened to correspond with the reduction in the number of loops. (See Plates, Fig. 4.)

For Enlisted Men.

For Sergeant Major, Quarter Master Sergeant, Drum Major and Chief Musicians.—Two rows of large size Marine buttons on the breast, seven in each row, placed at equal distances; the distance between each row, five and one-half inches at top, and three and one-half inches at bottom; standing collar to rise no higher than to permit the chin to turn freely over it; to hook in front at the bottom, and slope thence up and backward at an angle of thirty degrees on each side, making the total opening in front, an angle of sixty degrees; two loops of yellow worsted half inch lace on each side of the collar, with one small Marine button at the end of each loop; the bottom loop four and one-half inches long; the upper loop not to extend further back than the bottom loop, and the front of both loops to slope up and backwards, with the front of the collar, at an angle of thirty degrees, (See Plates, Fig. 1;) collar to be edged all around with a scarlet edging, except those of the Drum Major, Chief Musicians, and Musicians, which will be edged all around with white; plain round cuff, three inches deep; slash on the sleeve to be six inches long, and two and one-quarter inches wide at the points, and one and nine-tenths of an inch at the narrowest part of the curve; three loops of yellow worsted half inch lace, and three small Marine buttons, one in the centre of each loop, on the slash of the sleeve, (See Plates, Fig. 3;) loops on the sleeve two inches long, and one inch and one-eighth wide; the slashed flap on the sleeve to be edged with scarlet on the ends and indented edges, those of the Drum Major, Chief Musicians, and Musicians, to be edged with white; pockets with three-pointed edges in the folds of the skirt, one button at the hip, one at the centre of the pocket opening, and one at the bottom, making six buttons on the back and skirt of the coat;

DRESS OF THE MARINE CORPS.

the pocket side edges to have one point at the centre of the edge, and to curve thence up and down to the top and bottom, corresponding with slash on the sleeve; the pocket side edges to be edged with scarlet on the ends and indented edges; those of the Drum Major, Chief Musicians, and Musicians, to be edged with white. Lining of the coat black. Skirts full.

For Sergeants.—Same as for Sergeant Major, except that there shall be but two loops, and two small Marine buttons on the slash of the sleeve, and that the slash shall be shortened to correspond with the reduction of the number of loops. (See Plates, Fig. 4.)

For Corporals.—Same as for Sergeants.

For Privates.—Same as for Corporals.

The uniform coat of all enlisted men, except the Drum Major, Chief Musicians, and Musicians, shall be a double-breasted frock coat of dark indigo blue cloth, with skirt extending three-fourths of the distance from the top of the hip to the bend of the knee. Skirts full.

For Drum Major, Chief Musicians and Musicians.—A scarlet cochineal dyed cloth double-breasted frock coat, with skirt extending three-fourths of the distance from the top of the hip to the bend of the knee.

For Musicians.—Same as for Privates, except that the coat shall be of *scarlet cochineal* dyed cloth, and the collar, slashes on the sleeves, and the pocket side edges on the skirt, shall be edged with white. Skirts full.

Chevrons.

Shall be worn on the uniform coat above the elbow, points up, of yellow silk lace one-half inch wide, as follows:

For a Sergeant Major.—Three bars and an arc on a scarlet ground.

For a Quarter Master Sergeant.—Three bars and a tie on a scarlet ground.

For a Drum Major.—Three bars and a tie, with a star in the centre, on a scarlet ground.

For Sergeants.—Chevrons of yellow worsted half-inch lace, placed above the elbow, points up, as follows: For First Sergeants, three bars and a lozenge, edged with scarlet; other Sergeants, three bars edged with scarlet.

For a Corporal.—Same as for Sergeants, except that the chevrons shall consist of two bars each.

Buttons.

Same as now worn.

Trousers.

The uniform trousers for both officers and enlisted men, in cold weather, be of cloth, with French pockets, made

loose, and to spread well over the foot, of white and light blue mixed, commonly called sky blue mixture.

Officers *not* serving in line with troops, may wear dark blue cloth trowsers, with a welt of scarlet cloth, let into each outer seam.

In warm weather the uniform trousers for both officers and enlisted men, shall be of white linen. Both the cloth and linen trousers shall be cut for enlisted men as shown in plates. (See Plates, Fig. 5.)

The cloth for the trousers of enlisted men shall be of kersey.

Cloth trousers for Commissioned Officers shall have a welt of scarlet, three-sixteenths of an inch in diameter, let into the outer seam.

For Sergeant Major, Quarter Master Sergeant, Drum Major, Chief Musicians, and Musicians, a scarlet cord three-sixteenths of an inch in diameter, down the outer seam.

Chapeau.

The Commandant and Field Officers shall wear a chapeau (French pattern) of the following dimensions: Length from point to point, from seventeen to nineteen inches; height of front, or cock, four and three-quarter inches; back or fan, five and one-half inches; points, two and five-eighths inches wide; to be bound with black lace (silk) to show five-eighths of an inch; at each end a gold and scarlet flat tassel of fine gold and fine scarlet silk bullion; on the front or cock, a black uncut velvet cockade, three inches in diameter; a loop of gold one-half inch Marine lace, with a Marine coat-button at bottom of the loop; distance between the two strips of lace forming the loop, one-quarter of an inch. (See Plates, Fig. 6.)

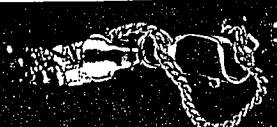
Plume.

For the Commandant.—Of yellow swan feathers, bunched, (See Plates, Fig. 7.) length, twelve inches, drooping from a three inch stem. Plume to be worn in a leather socket placed inside of front or cock, four inches in advance of the gold loop. (See Plates, Fig. 8.)

For Field Officers.—Same as for Commandant, except that it shall be of cock or vulture feathers, and that the color shall be red. (See Plates, Figs. 6, 7 and 8.)

Uniform Cap.

Company Officers.—Of fine black cloth; top, vizor, and bands of fine glazed black leather; vizor bound around the edges with the same; base line of cap to be *perfectly straight*, vizor straight, and placed upon a continuation line; height of cap in front, from the rim under the vizor, five and one-half inches; height of back six and one-half inches; difference of height between front and back, one inch; diameter of top five and three-eighths inches; counter-sinking of top, three-eighths of an inch; width



of lower black glazed leather band, one inch and one-eighth; width of upper black glazed leather band, seven-eighths of an inch; width of vizor six and three-quarter inches, depth one inch and one-half. (See Plates, Fig. 9.)

Enlisted Men.—Same as for Company Officers, substituting black felt for cloth. For Drum Major, of Astracan lambskin. (See Plates, Fig. 10.)

Ornament.

Company Officers.—A United States Shield within a half wreath; resting upon the centre of the shield, a bugle and the letter M; the letter to be placed within the ring of the bugle, and to just fit that ring; the letter to be of *solid white metal fastened on to the shield*; the shield, bugle, and wreath to be of *yellow metal, heavily gilt*. (For full dimensions of ornaments, see Plate, Fig. 11.)

Enlisted Men.—Same as for Company Officers, except that the shield, bugle, and half wreath will not be gilt, but kept bright. The letter M, will be of *white metal like that on the ornament of the officers' cap*.

Pompon.

For all Company Officers.—Of gold net two inches in height and one and one-half inches in diameter, to be made over a cork foundation of elliptical form. (See Plates, Fig. 9;) the pompon to be fixed to a wire loop three inches long, and when attached to the cap, to pitch forward in a line parallel with the rear slope of the cap, (See Plate, Fig. 9;) between the top of the shield in the ornament and the base of the pompon, a hemisphere of yellow metal heavily gilt.

For Enlisted Men, except the Drum Major.—A red worsted ball, five inches in circumference, (See Plate, Fig. 9;) when attached to the cap, to pitch forward in a line parallel with the rear of the slope of the cap. Between the top of the shield, in the ornament, and the base of the pompon, a hemisphere of yellow metal, to be kept bright, with a red leather ground just under the knot, above the shield on the uniform cap, extending out and scolloped, or cut in points so as to give effect.

For the Drum Major.—Same as for enlisted men, except it shall be ten inches in circumference, to be fixed on a ring, the ring on a loop. (See Plates, Fig. 10.)

The uniform cap ornament, and pompon, will not be issued to enlisted men as part of the cap and clothing allowance, but will be served out *on charge*, to be returned at the expiration of each enlistment, and to be receipted for by an officer, as are arms and accoutrements.

Stocks.

Officers.—For all officers, black; when in uniform, the shirt collar will not appear more than one-fourth of an inch above the stock.

For Enlisted Men.—Of soft black leather, according to pattern in Quarter Master's Department.

Boots.

Officers.—Ankle or Jefferson.

Enlisted Men.—Of the pattern now furnished to the Infantry of the U. S. Army; to be made rights and lefts, and inspected before they are dressed off; the dressing to be done under the supervision of the Quarter Master's Department.

Spurs.

For all Mounted Officers.—Of yellow metal, or gilt.

Gloves.

White.

Sash.

For the Commandant.—Of buff silk net, with silk bullion fringe ends; sash to go twice around the waist, and to tie behind the left hip; pendant part not to extend more than eighteen inches below the tie.

For Field and Company Officers.—Of crimson silk net, to go around the waist and tie, as for the Commandant. The Sash will be worn by "Officers of the day," across the body, scarf fashion, from the right shoulder to the left side, instead of around the waist, tying behind the left hip.

For Sergeant Major, Quarter Master Sergeant, Drum Major, Chief Musicians and First Sergeants.—Of red worsted, with worsted bullion fringe ends, to go twice around the waist, and to tie behind the left hip; pendant part not to extend more than eighteen inches below the tie. The sash will be worn (over the coat) on all occasions of duty of every description, except fatigue.

Sword Belt.

For all Officers.—A waist belt not less than one and one-half inches, nor more than two inches wide, to be worn over the sash; the sword to be suspended from it by slings of the same

material as the belt, with a hook attached to the belt, upon which the sword may be hung. (See Plate, Fig. 12.)

For the Commandant.—Of Russia leather, with three stripes of gold embroidery; the slings embroidered on both sides; or the same belt as to be immediately prescribed for all other officers.

For all other Officers.—Of white glazed leather.

Sword Belt Plate.

For all Officers.—Gilt rectangular, two inches wide, with a raised bright rim; a wreath of laurel encircling the Arms of the "United States;" eagle, shield, scroll, edge of cloud, and rays, bright. (See Plate, Fig. 13.)

Sword and Scabbard.

For the Commandant.—Either a sword of honor, presented by the General Government, or that of a State, or the sword prescribed for all other officers.

All other Officers.—The sword of the pattern adopted by the War Department, April 9th, 1850. (See Plates, Fig. 14.)

For Enlisted Men.—Same as U. S. Infantry.

Sword Knot.

For all Officers.—Gold lace strap, with gold bullion tassel.

Epaulettes.

For the Commandant.—Gold, with solid crescent; device of the Corps; a bugle of solid silver, containing the letter M within the ring of the bugle; bugle and letter same size as that worn on the undress cap. (See Plate, Fig. 17.) This device to be placed within the crescent; on the centre of the strap, a silver embroidered star one and one-eighth inches in diameter, dead and bright bullion one-half inch in diameter, and three and one-half inches long.

For a Colonel.—Same as for the Commandant, substituting a silver embroidered spread eagle for the star upon the strap.

For a Lieutenant Colonel.—Same as for the Commandant, substituting for the star, a silver embroidered leaf upon the strap.

For a Major.—Same as for the Commandant, *without the star on the centre of the strap.*

For a Captain.—Same as for the Commandant, except that the bullion will be only one-fourth of an inch in diameter, and two and one-half inches long; and substituting for the star two silver embroidered bars.

For a First Lieutenant.—Same as for the Commandant, except that the bullion will be only one-eighth of an inch in diameter, and two and one-half inches long; and substituting for the star one embroidered silver bar.

For a Second Lieutenant.—Same as for a First Lieutenant, omitting the silver embroidered bar.

Epaulettes will only be worn in full dress.

Full dress shall be worn on parades, occasions of ceremony, and on Marine General Courts Martial.

For Enlisted Men.—Yellow metal crescent, and scale strap, with yellow worsted bullion; the bullion to be removable, in order to clean the metal.

For Sergeant Major, Quarter Master Sergeant, Drum Major, and Chief Musicians.—Bullion three and one-half inches long, and three-eighths of an inch in diameter.

For Sergeants.—Same as for Sergeant Major, except the bullion will be only one-quarter of an inch in diameter.

For Corporals.—Same as for Sergeant Major, except that the bullion will be only one-sixteenth of an inch in diameter.

For Privates.—Same as for Corporals.

The metallic crescent and scale strap will be made according to pattern. (See Plate, Fig. 15.)

The metallic crescent and scale strap will not be issued as part of the clothing allowance, but will be served out *on charge*; to be returned at the expiration of each enlistment, and to be received for by an officer, as are arms and accoutrements.

Undress Coat.

Officers.—For all officers, a double-breasted dark blue cloth frock coat, the skirt to extend three-fourths of the distance from the top of the hip to the bend of the knee. Skirts full.

For the Commandant.—Two rows of buttons on the breast, eight in each row, placed in pairs; the distance between each row, five and one-half inches at top, and three and one-half inches at bottom; stand-up collar, to rise no higher than to permit the chin to turn freely over it; to hook at the bottom, in front, and slope thence up and backward at an angle of thirty degrees on each side, making the total opening in front an angle of sixty degrees; cuffs two and one-half inches deep, to go around the sleeve parallel with the lower edge, and to button with three small buttons at the under seam; pockets in the folds of the skirts, with one button at hip, and one at the end of each pocket, making four buttons on the back and skirt of the coat; collar and cuffs to be of dark blue velvet; lining of the coat black.

For all other Officers.—Same as the Commandant, except that the buttons on the breast will be placed at equal distances; collar and cuffs of the same material and color as the coat.

For Enlisted Men.—A single-breasted dark indigo blue kersey frock-coat; one row of seven Marine buttons on the breast; stand-up collar, (with a red welt inserted in the seam, where the collar joins the coat,) to rise no higher than to permit the chin to turn freely over it, to hook in front at bottom, and slope thence up and backward at an angle of thirty degrees on each

side, making the whole opening in front an angle of sixty degrees; cuffs two and one-half inches deep, to go around the sleeves parallel with the lower edge, and to button with two small Marine buttons; skirt of the coat to extend from the top of the hip to the crotch of the trousers, with one button over the hip, making two buttons on the back of the coat; no pockets in the skirts; lining of the coat black. Skirts to be full. Non-commissioned Officers will wear chevrons of their grade, (as prescribed in the full dress,) above the elbow, points up.

Fatigue Sacks.

All enlisted men on board of sea-going vessels will wear a flannel fatigue sack, of dark indigo blue; open half way down the front, and buttoning with four small Marine buttons; yoke on the shoulder; the sack to extend in length half the distance from the top of the hip to the bend of the knee; small turn-down collar of the same material; sleeves like a coat sleeve, but without cuff or opening, and made larger at the wrist, to permit the free passage of the hand; seams at the side to be closed up all the way down. Non-commissioned Officers will wear the chevrons of their grade, (as prescribed in the full dress,) on the sleeves above the elbow, points up. No lining.

Summer Fatigue Coat.

Officers.—On ship board, the Summer Coat for Officers shall be of white linen, made like the blue cloth undress coat. This coat may be worn, at their pleasure, by officers visiting the shore in foreign ports, except on occasions of parade or ceremony. When this coat is worn, the shoulder knot, to be hereafter prescribed, shall also be worn.

The fatigue sack for enlisted men shall be worn at sea in warm weather; and in the tropics, on ordinary occasions, in port also. When worn, it must be with a white shirt underneath.

Fatigue Cap.

Officers.—All officers shall wear, in undress, a dark blue cloth cap, according to pattern (see Drawings, Fig. 16), black ribbed silk band one inch and five eighths of an inch wide; three rows of black silk braid, three-sixteenths of an inch wide on each seam, from the crown to the bottom; in the centre of crown a knot of the same braid, and also one row around the edge of the crown; visor six and one-half inches wide, and one and one-half inches deep (all as seen in Plates, Figs. 16", 17", 18").

Enlisted Men.—Same as officers, except the silk band and visor. The lining in the band and crown to be of prepared cloth.

Ornament. (See Plates, Fig. 17.)

Officers.—A Gold embroidered bugle, two and one-quarter inches long, and one and five-sixteenths greatest width; solid silver or plated M within the centre of the ring of the bugle, the letter to be made with an eye on the back, like a button, that it may be removed and cleaned; bugle to be embroidered on scarlet cloth, which will be trimmed off, so as to present a margin of one-eighth of an inch, following the line of the embroidery.

For Enlisted Men.—For all enlisted men, a bugle of yellow metal same size as that of the officer, the letter M in white metal; the letter to rest on a circular piece of red leather; both bugle and letter to be fastened with eyes and rings, on leather strips. The undress cap to be provided with a waterproof cover, according to pattern sent to Quarter Master's Department.

Shoulder Knot.

Officers.—All officers shall wear on each shoulder of the undress coat, and undress white linen coat, a shoulder knot of fine gold cord three-sixteenths of an inch in diameter; the shoulder knot to consist of a twisted strap, and an end of a clover leaf shape; the clover leaf end to be lined with scarlet cloth, to show through the openings; the twisted strap to be also lined, *only* so as to show through the openings; there will be no cushion under the end which rests on the shoulder and the twisted strap extending from thence up to the coat collar; the knot to be fastened by a small Marine button, and tags at the collar; and at the shoulder two tags; tags to pass through the cloth of the coat and tie on the inside. (See Plates, Fig. 18.)

For the Commandant.—Four cords in the twisted strap and clover leaf end, with a silver embroidered star in the centre of the clover leaf.

For a Colonel.—Same as for the commandant, substituting a silver embroidered spread eagle for the star.

For a Lieutenant Colonel.—Same as for the Commandant, substituting a silver embroidered leaf for the star.

For a Major.—Same as for the Commandant, but without any device.

For Captains.—Of three cords, with two silver embroidered bars in the clover leaf ends.

For First Lieutenants.—Same as for Captains, omitting one of the bars.

For Second Lieutenants.—Same as for Captains, but without any device.

(For dimensions and style of shoulder knots, see Plates, Fig. 18.)

Over-Coat.

Officers.—A "cloak coat" of dark blue cloth, lined with scarlet woolen, and closing by means of four frog olive-shaped buttons, of black silk, one inch and one-eighth in length, and loops of black silk cord down the breast, and at the throat by a long loop a *echelle* without tassel or plate, on the left side, and a black silk frog, button on the right; cord for the loops three-sixteenths of an inch in diameter; back a single piece, slit up from the bottom, from fifteen to seventeen inches, according to the height of the wearer, and closing at will, by buttons and button-holes in a fly flap; collar of the same color and material as the coat, rounded at the edges, and to stand or fall; when standing, to be about five inches high; side pieces, with the pockets cut according to pattern. (See Plates, Fig. 19.) Sleeves loose, of a single piece, and round at the bottom without cuff or slit; the sleeves to be cut according to pattern. (See Plates, Fig. 20.) Around the front, the lower border, the edges of the pockets, the edges of the sleeves, collar and slit in the back, a flat braid of black silk, one-half an inch wide; and around each frog button on the breast, a knot two and one-quarter inches in diameter, of black silk cord one-sixteenth of an inch in diameter, arranged according to drawing. (See Plates, Fig. 21.) A cape of the same color and material as the coat, removable at the pleasure of the wearer, and reaching to the edge of the coat sleeve when the arm is extended; lining of cape black; coat to extend down the leg from six to eight inches below the knee, according to height. To indicate rank, there will be on both sleeves, near the lower edge, a knot of flat black silk braid, one-eighth of an inch in width, according to drawings, (see Plates, Fig. 22,) and composed as follows:

For the Commandant.—Of five braids, double knot.

For a Colonel.—Of five braids, single knot.

Do. Lt. Colonel.—Of four braids, single knot.

Do. Major.—Of three braids, single knot.

Do. Captain.—Of two braids, single knot.

Do. First Lieutenant.—Of one braid, single knot.

Do. Second Lieutenant.—A plain sleeve, without knot or ornament.

Enlisted Men.—Of blue grey mixture, stand-up collar; single breasted, with one row of seven large Marine buttons on the breast; loose sleeves, with cuffs five inches deep; cape to be cut circularly, and to reach down in front to the upper edge of the cuff when the arm is extended, and to button all the way down in front, with five small Marine buttons. The cape to be made separate from the coat, and to be buttoned on. Non-commissioned Officers shall wear the chevrons of their grade, as prescribed for the full dress coat, on the cuffs of their overcoats.

Other Articles of Clothing.

Officers.—Officers may wear a fatigue jacket of dark blue cloth, lined with scarlet, collar same as undress coat, but edged all around with one-half inch gold lace; pointed cuff, point up, five inches deep, and edged all around with half inch gold lace,

sixteen small Marine buttons in a single row in front and at the opening of the sleeve; shoulder knots will be worn with the fatigue jacket.

Enlisted Men.—The flannel shirts shall be changed in color from red to blue.

The blankets to be all wool, and to weigh four pounds; color grey, with the letters U. S. M. in black, four inches long; blankets to be seven feet long, and five and a-half feet wide; the letters U. S. M. to be placed in the centre.

Allowance of clothing for an enlistment of four years, as follows:

One uniform cap, two uniform coats, two sets of epaulette bullion, seven pairs linen trousers, eight pairs of woolen trousers, twelve shirts, two stocks, sixteen pairs of shoes, one blanket, eight pairs of socks, eight pairs of drawers, four fatigue caps, four fatigue coats, eight blue flannel shirts, one great coat.

After a guard marches on board of a sea-going vessel, each enlisted man shall be entitled to receive the additional articles of clothing following: one great coat, (*on charge, and only to be worn, under direction of the Commanding Marine Officer in port, when the men are posted, or formed as a guard of honor on the quarter deck; at all other times to be kept in the Marine Store-room: these extra coats to be worn, on post, by day only, in clear, cold weather,*) and two dark blue flannel sacks.

EQUIPMENTS.

Belts.

All enlisted men shall wear white waist belts of the French pattern, with the French clasp and knapsack sliding slings; the cartridge box to be attached to the belt by a leather loop, and to slide by it along the belt, the bayonet scabbard to be attached to the belt by a frog, also sliding on the belt: Non-commissioned Officers wearing swords, as also Musicians, will wear their swords in a sliding frog.

(FOR PATTERN OF BELT, complete, see pattern in the Quarter Master's Office, Head Quarters.)

Drum Sling.—White webbing, provided with a brass drum stick carriage, according to drawing. (See Plates, Fig. 23.)

Knapsack.

Of cow-skin, (*black*) and to be made and slung, according to pattern in the Quarter Master's Department, Head Quarters.

Haversack.

Of same material, size, and form, as those issued to the U. S. Army.

DRESS OF THE MARINE CORPS.

9

Canteens.

Same as used in the U. S. Army.

Musket Slings.

The Musket Slings to be of black leather; muskets will not be put into the hands of troops without the slings.

The Knapsack, Haversack, Canteens, and Musket Slings, will be served out *on charge*, and receipted for by an officer, as are arms and other equipments. *Knapsacks, Haversacks, and Canteens* will be kept in the store-room on ship board, and put in the hands of the troops when occasion requires.

[Signed,] JNO. HARRIS,
Lt. Col. U. S. Marines, and President of Board.

[Signed,] JNO. R. F. TATTNALL,
First Lt. U. S. Marines, and Recorder.

U. S. MARINE BARRACKS, Brooklyn, New York,
December 11th, 1858.

[Copy.]

NAVY DEPARTMENT,

January 24th, 1859.

SIR:—

Your letter of the 18th inst., transmitting Report and Drawings, made by a Board of Officers, to Revise the Uniform of the Marine Corps, has been received.

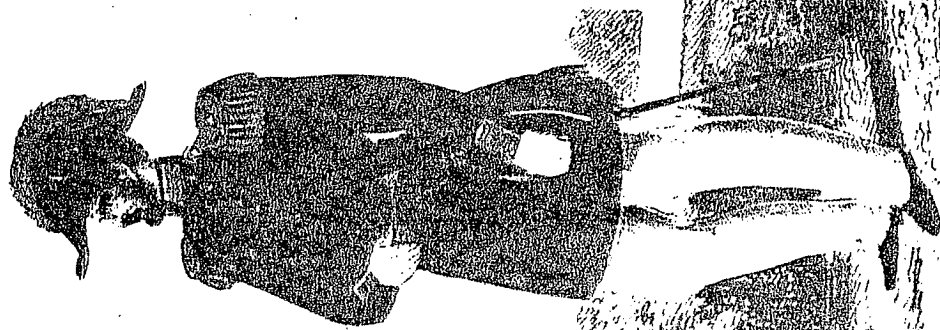
The Report and Drawings are herewith returned, approved, and will be adopted hereafter as the Uniform of the Marine Corps.

I am, respectfully, your obedient servant,

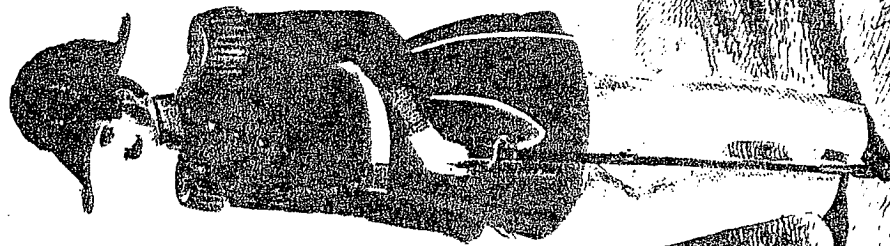
ISAAC TOUCEY.

LIEUT. COLONEL JOHN HARRIS.

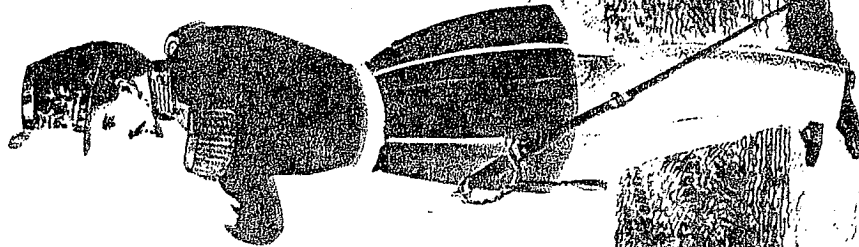
Commandant Marine Corps, Head-Quarters.



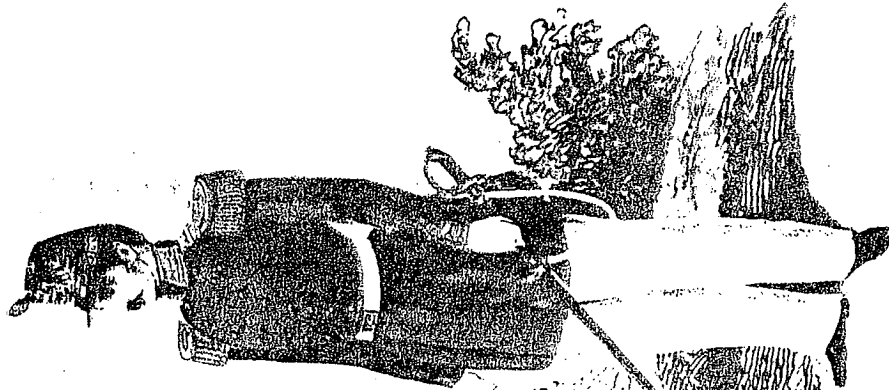
COLONEL COMMANDANT
Commandant



MAJOR
Major

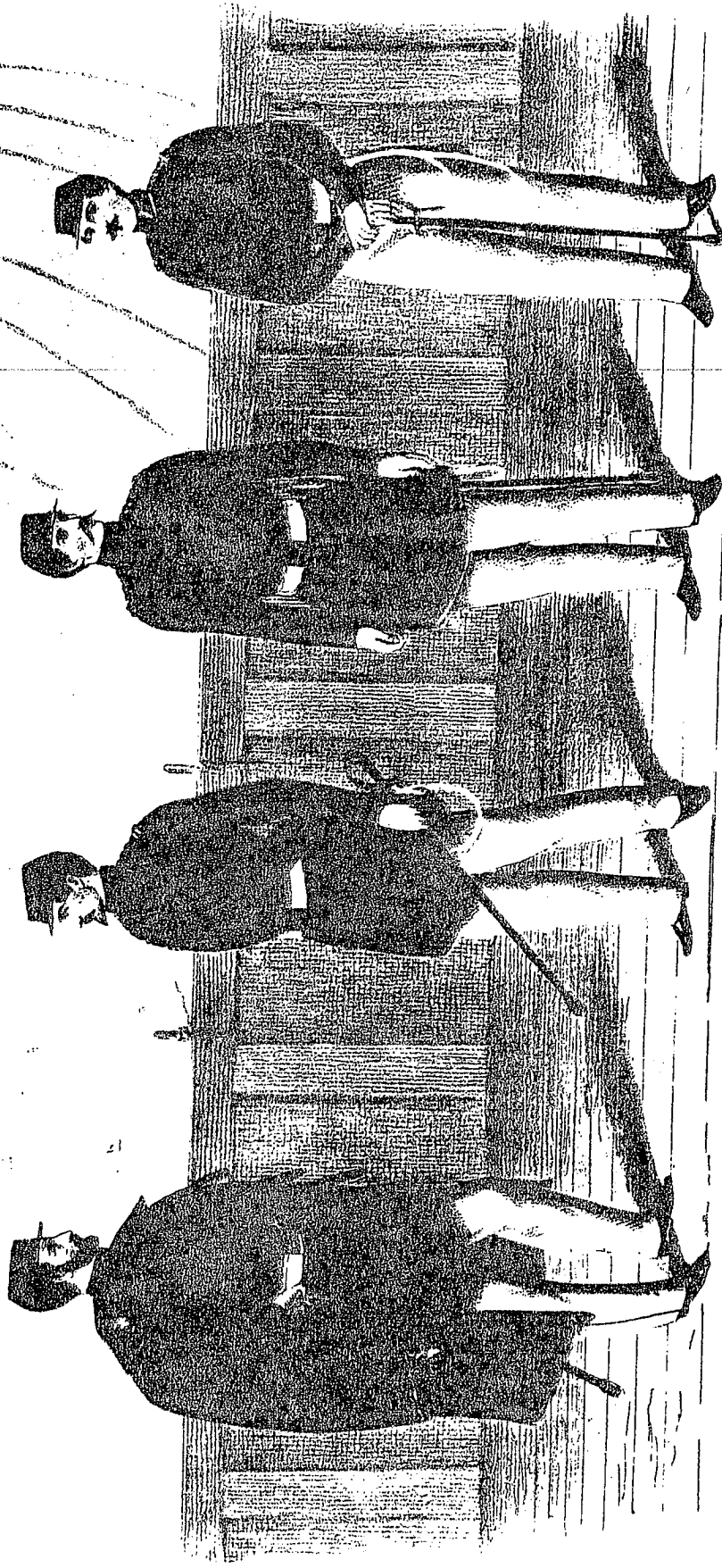


CAPTAIN
Captain



FIRST LT.
First Lieutenant

By permission of the War Office, London, 1914.

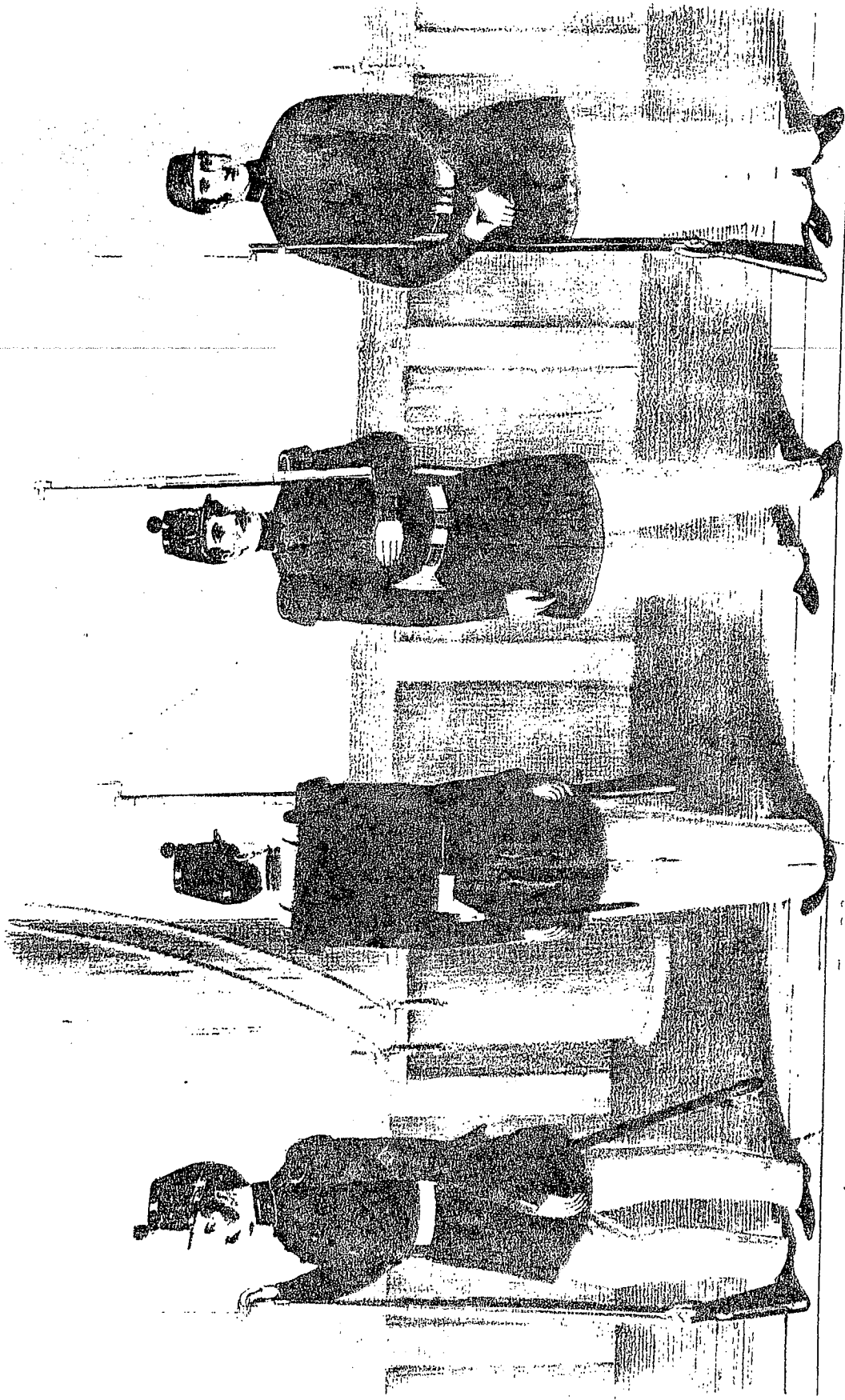


LIEUTENANT COLONEL

CAPTAIN
AS OFFICER OF THE DAY

SECOND LT.
SECOND PARTICIPANT

FIRST LT.
FIRST PARTICIPANT
Boique Lake



FIRST SERGEANT

CORPORAL

PRIVATE

PRIVATE
(FATIGUE)

1872-1873

1872-1873

Fig. 1



Scale of inches for Collars & Sleeves

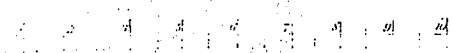
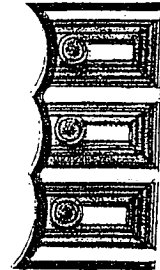


Fig. 4



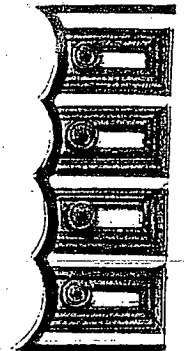
Lieutenants

Fig. 3



Captains

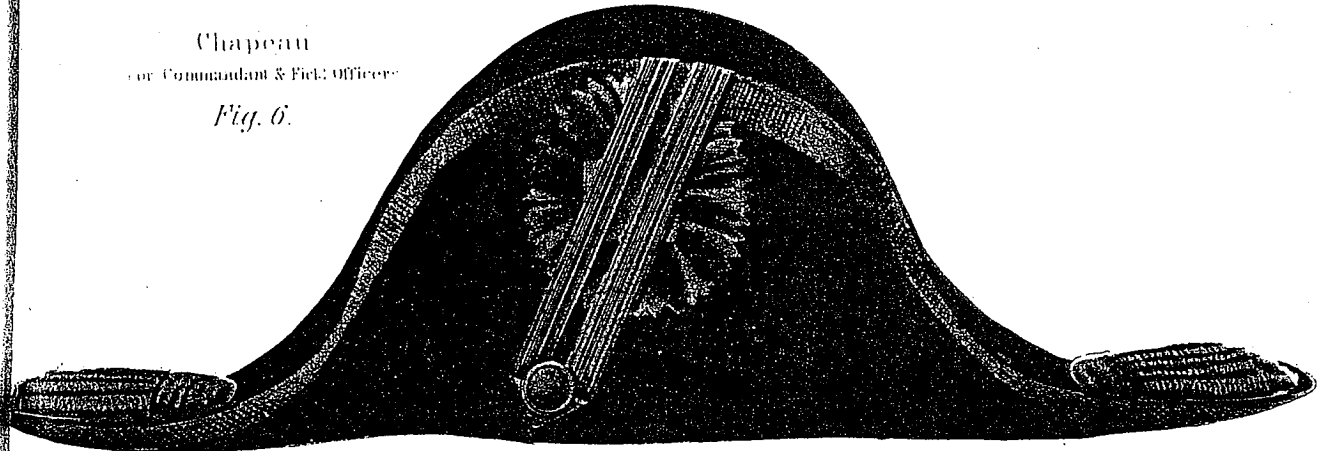
Fig. 2



Field Officers.

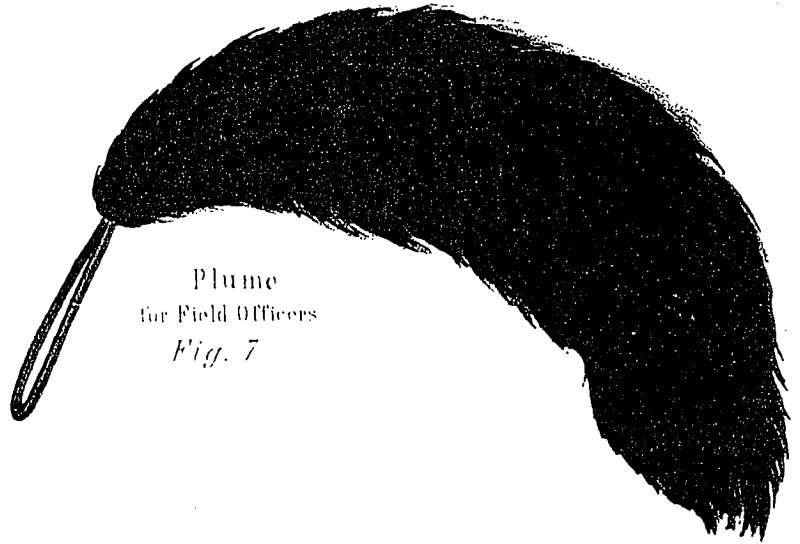
Chapeau
for Commandant & Field Officers

Fig. 6.

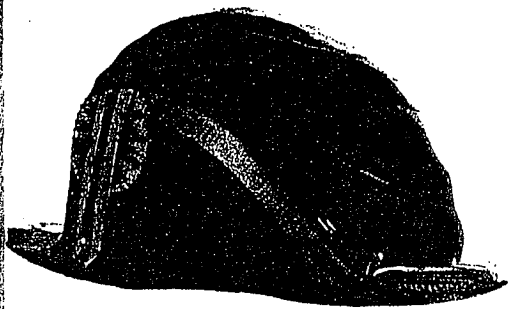


Plume
for Field Officers

Fig. 7



Chapeau Complete
Fig. 8.



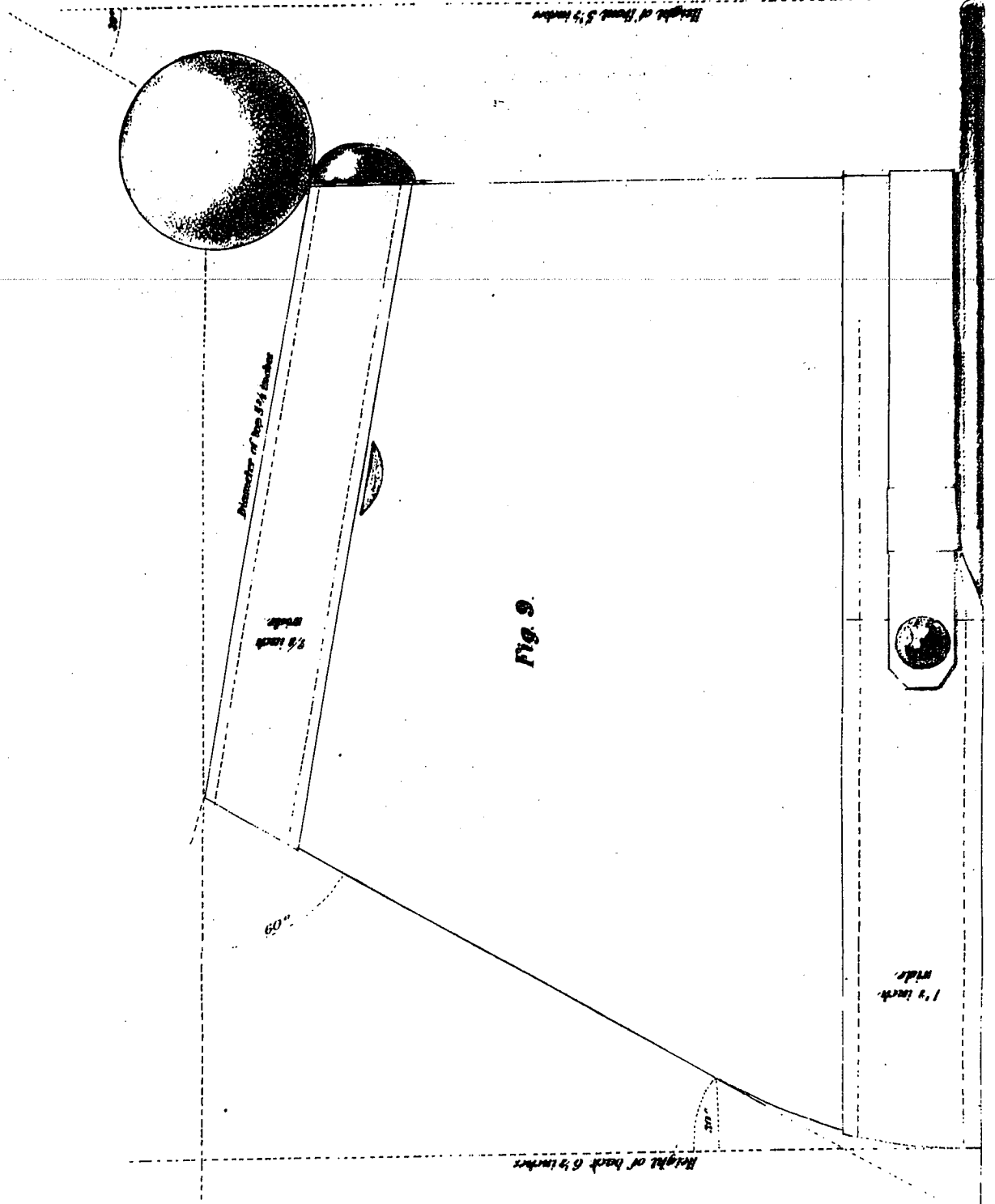


Fig. 9.

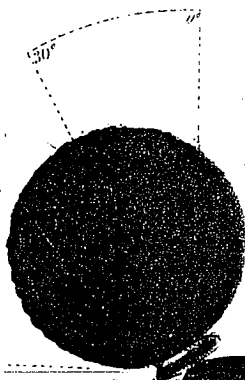
Engraved by J. W. P. P. P.

Section

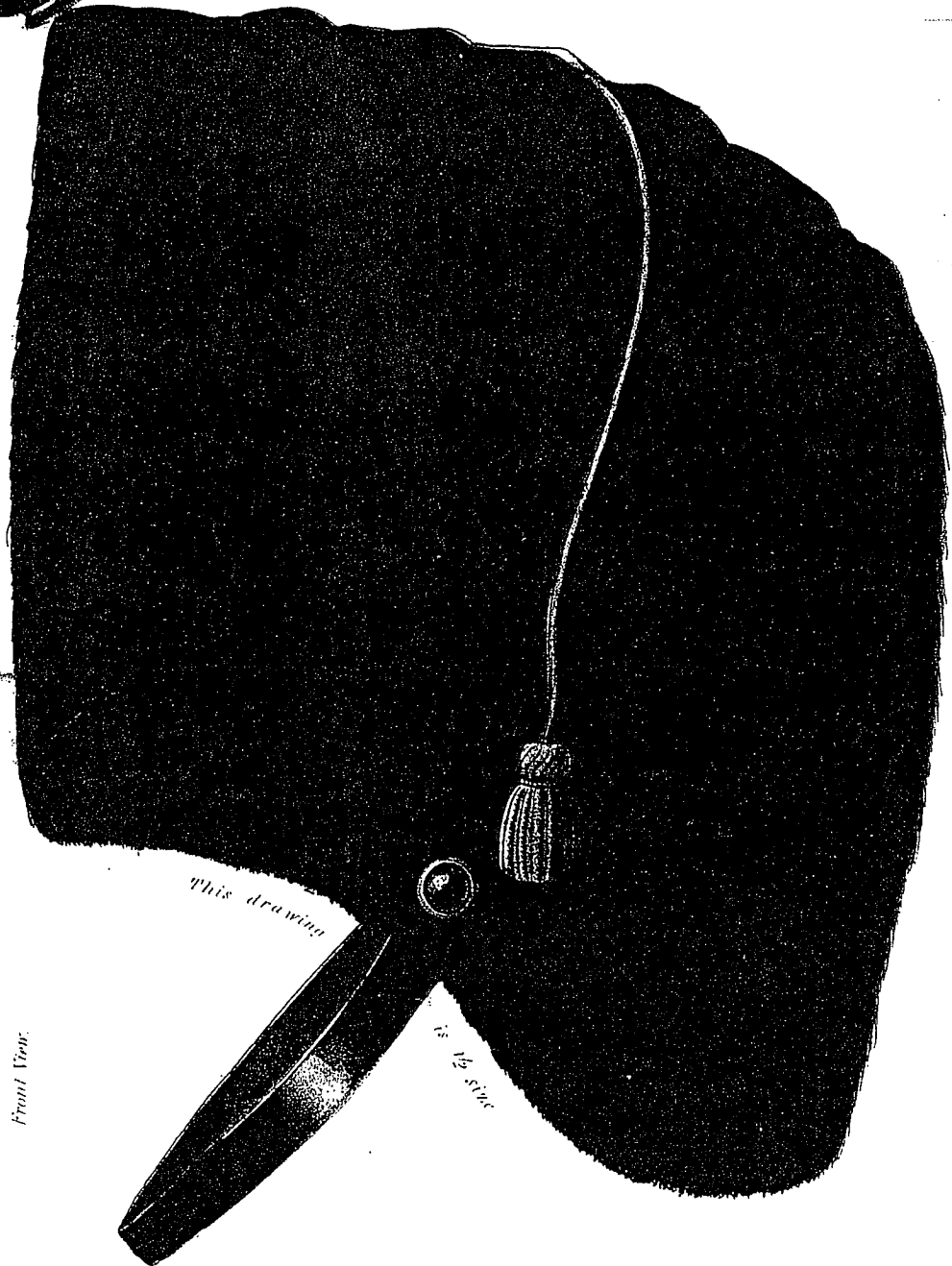
Cap for Drum Major.

The full size is given by the figures in inches

Fig. 10.



12 inches



13 1/2 inches

This drawing

is 1/2 size



Front View.

Uniform Cap Ornament
Full Size.

For Company Officers.

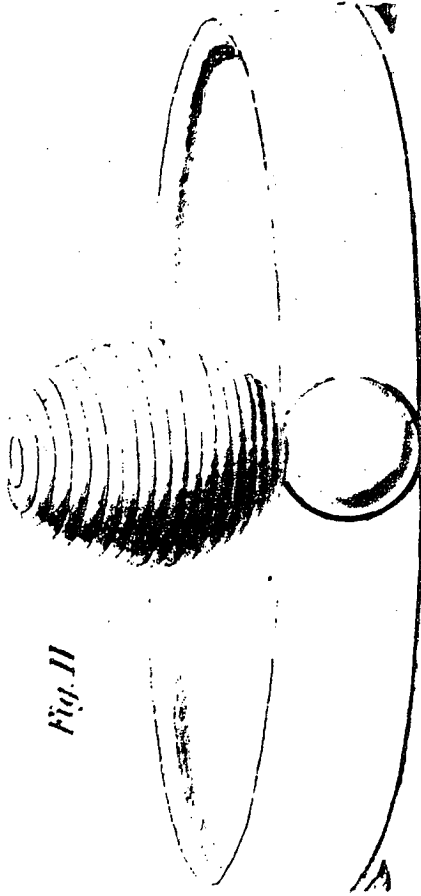
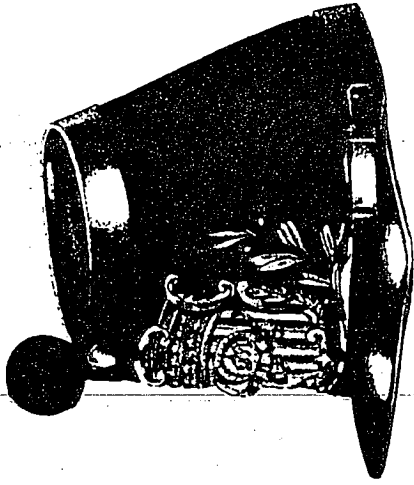


Fig. II

Uniform Cap
Complete



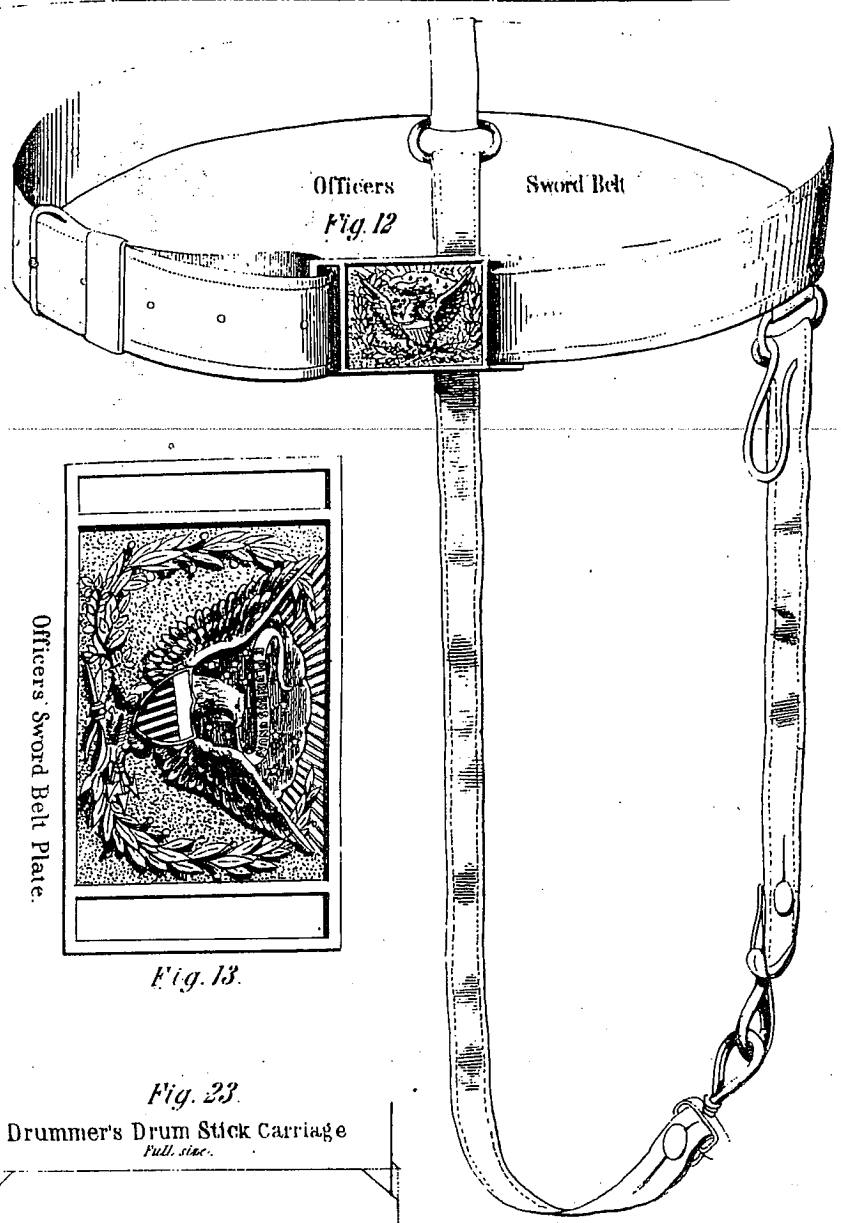
Note.
Officers' Bumpkin is of Gold Net.
That of enlisted men as shown in above
drawing, made of Red Worsted.



1

1

Catlin



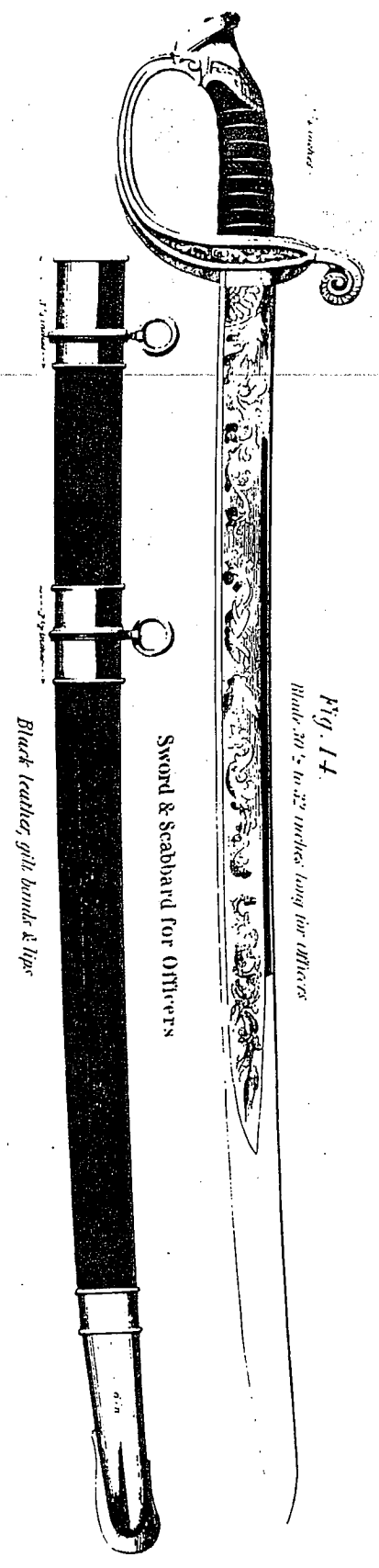
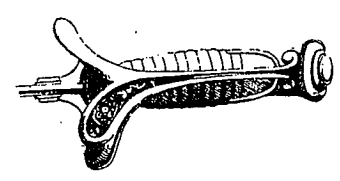
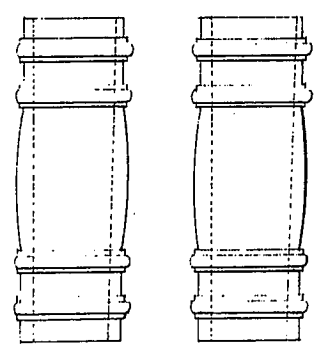
Officers
Sword Belt
Fig. 12



Officers' Sword Belt Plate.

Fig. 13.

Fig. 23.
Drummer's Drum Stick Carriage
Full size.



Black leather, gilt bands & tips

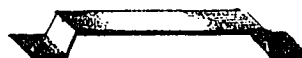
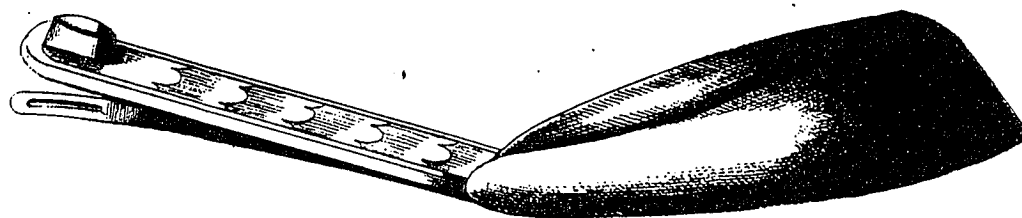
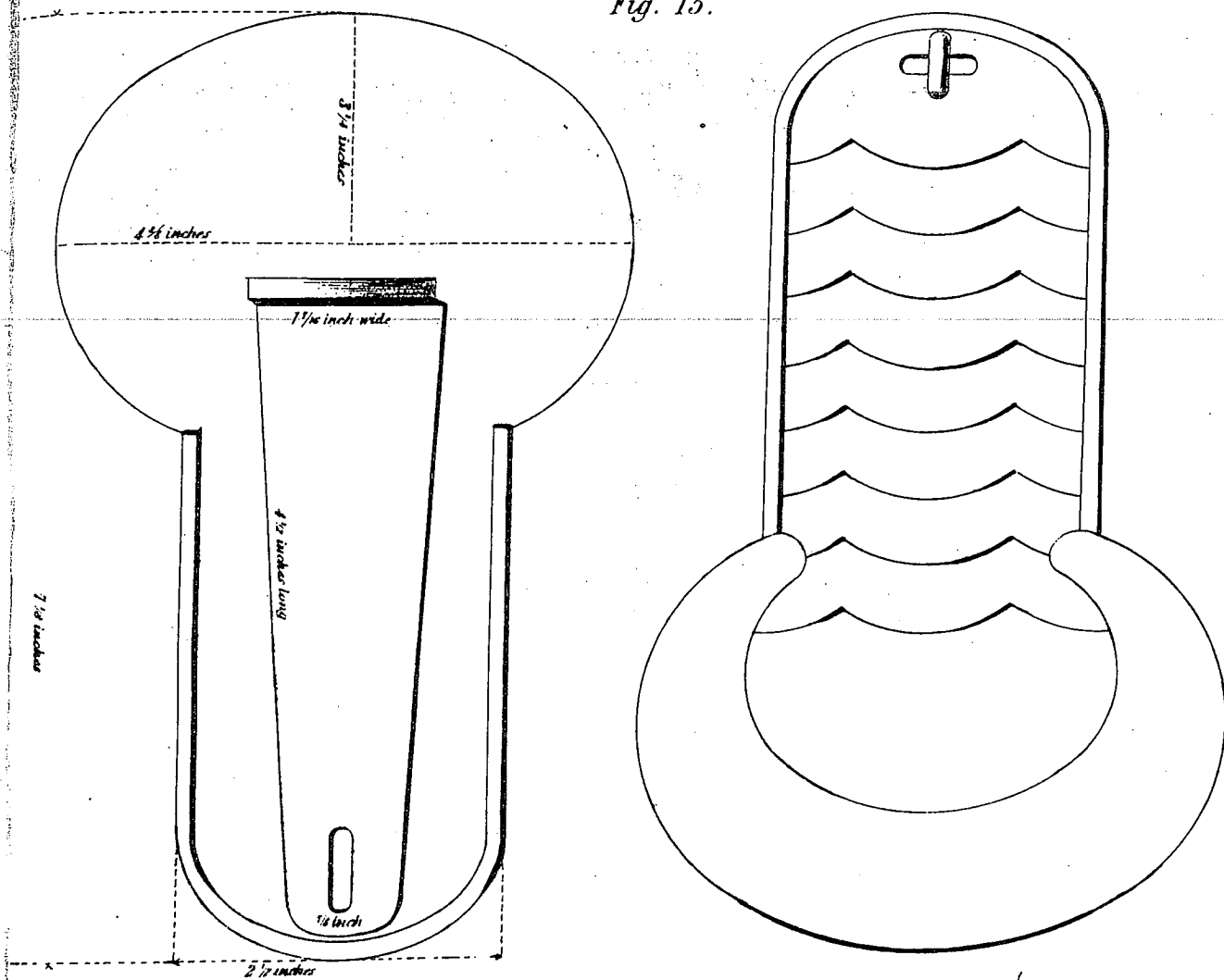
Sword & Scabbard for Officers

Fig. 14.
Blade 30 1/2 to 32 inches long for officers

Revised & Enlarged, 1868 Phila

Metallic Scale for Enlisted Men.
Worsted bullion to be attached.

Fig. 15.



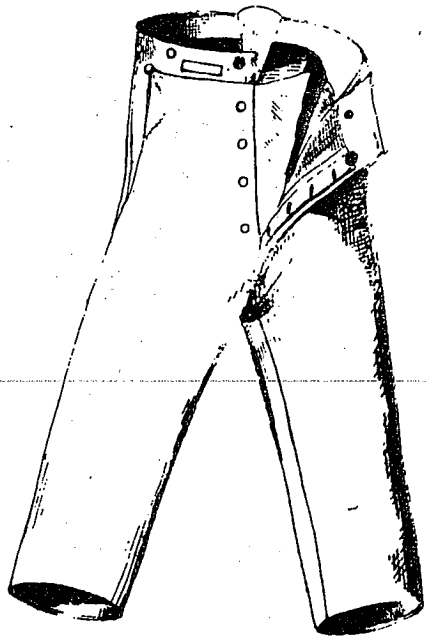
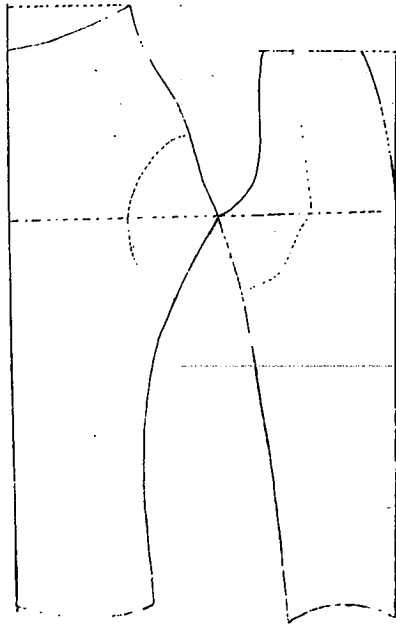
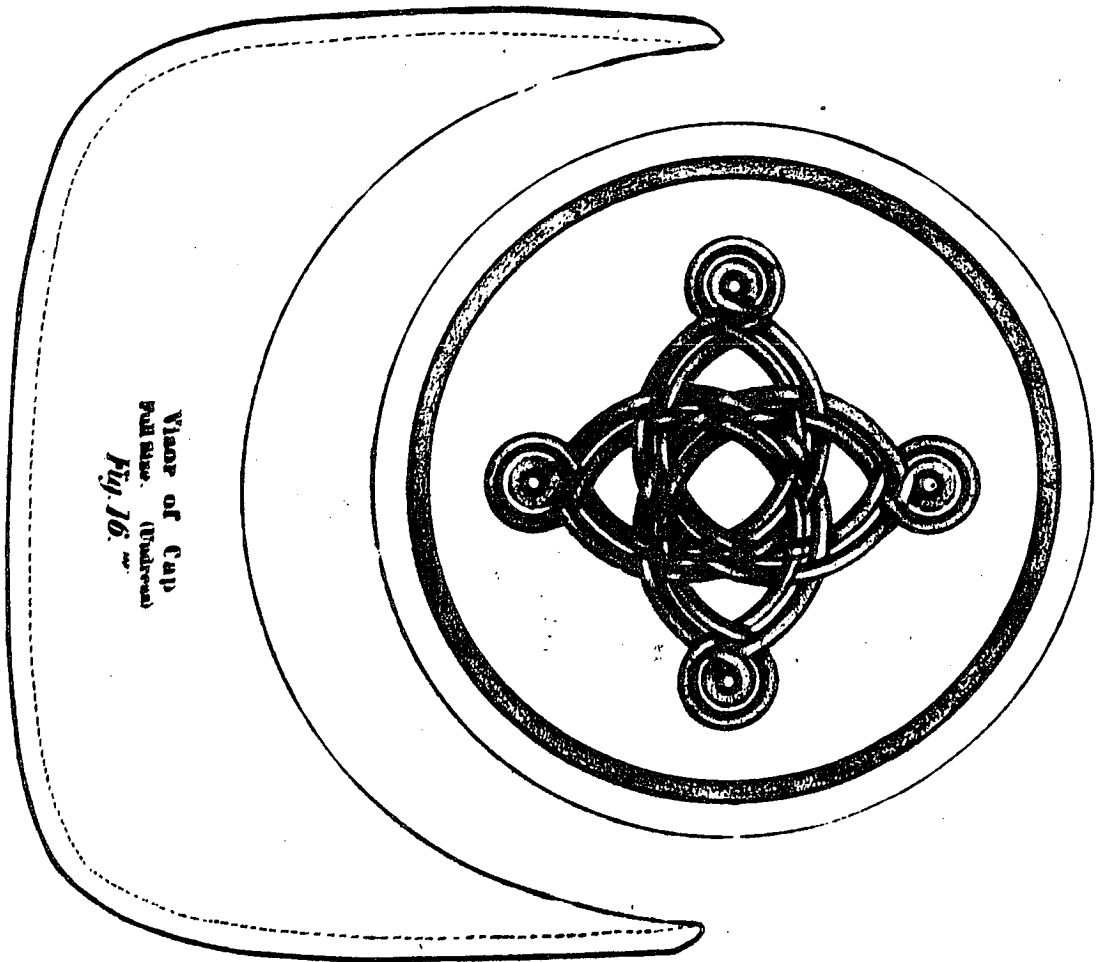


Fig. 5.



Pattern for cut of belted men's Trowsers.



Top of Officers' Cap
Full size (Undress)
Fig. 16.

Visor of Cap
Full size. (Undress)
Fig. 16.

Visor to be finished with glassed leather, same as that of which it is made.

Note.

In this drawing the dotted line is that marked for cutting the cap out.

The undress cap for all enlisted men to be like that of officers, but without the silk band and band.

The Ornament to be the same as for officers, but of yellow metal.

Pattern of CAP.
Furnished by Harwick & Co., makers, 510 Broadway, N.Y.

Side pieces
Full Size

Band of Cap
Full Size. (Address)

of Officers Cap
(Address)

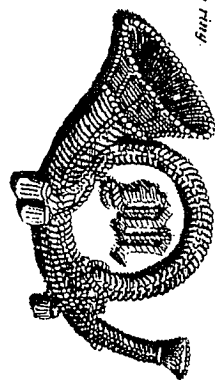
Fig. 16.

Fig. 16.

of gold embroidered upon scarlet cloth
described to show 1 & of tabs on the edges
following the line of the embroidery.
Letter of silver (solid) and made with an
over on the back, to fasten with a ring.

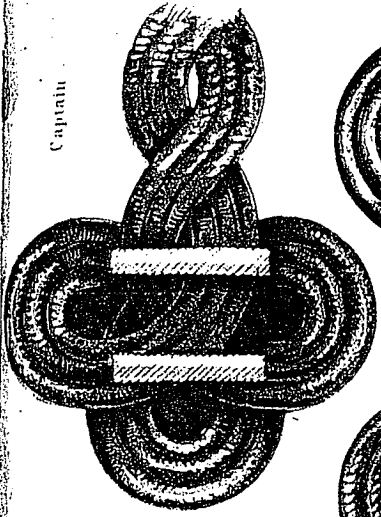
Fig. 17.

Ornament for Officers.
Full Size. (Address)

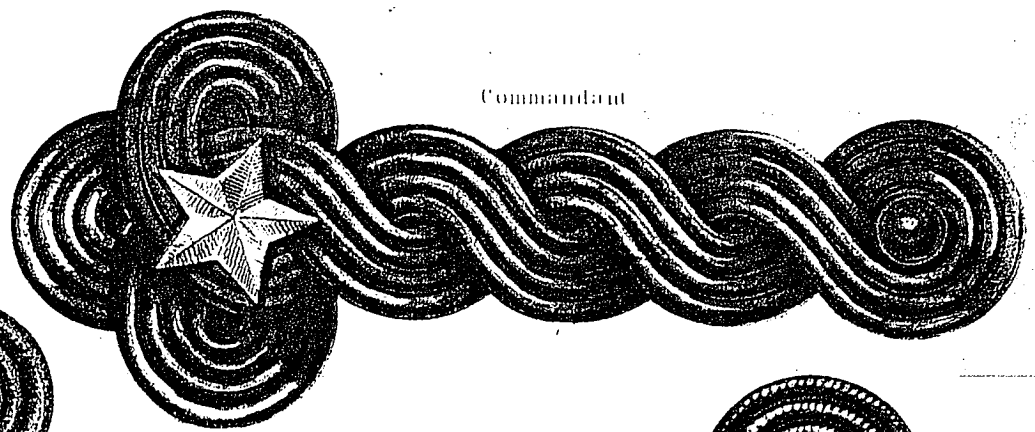


Shoulder Knobs.

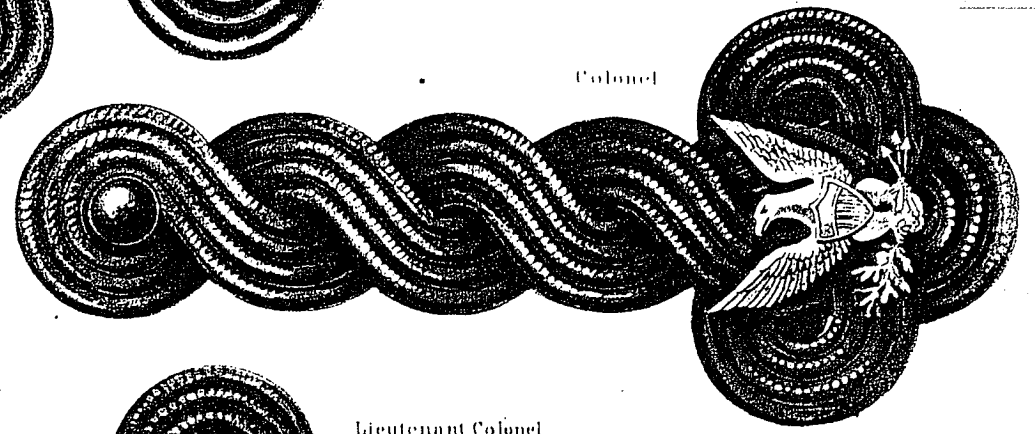
Captain



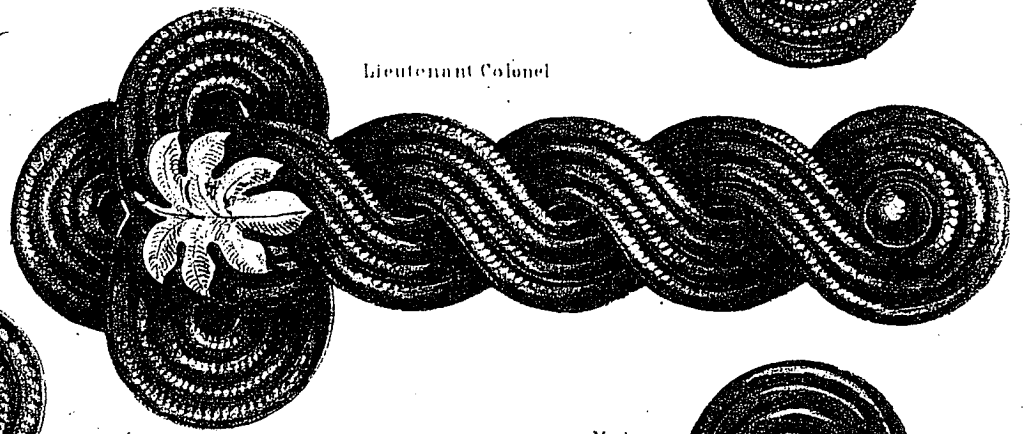
Commandant



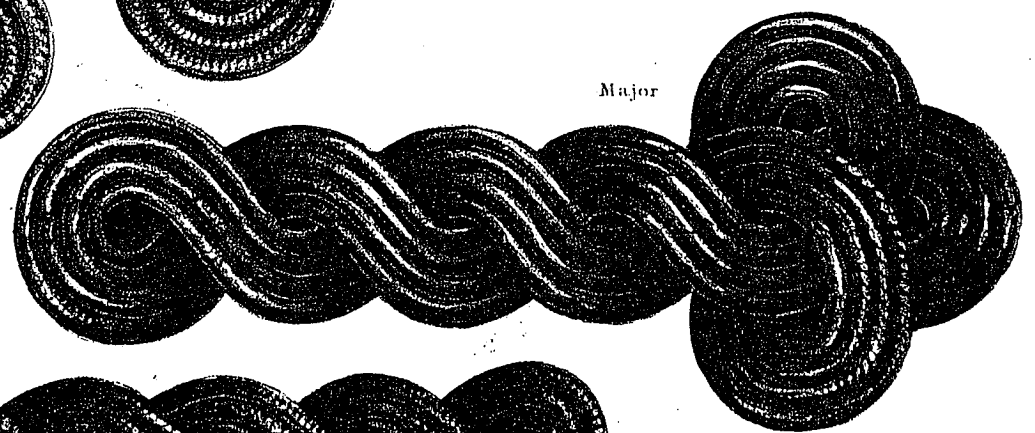
Colonel



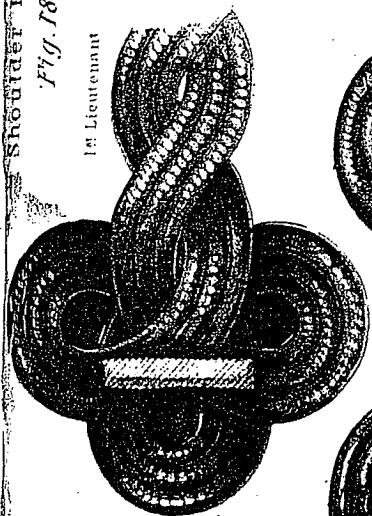
Lieutenant Colonel



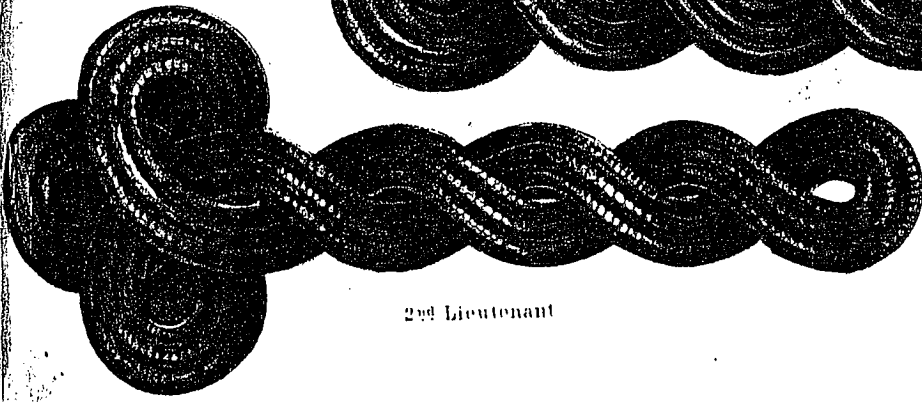
Major



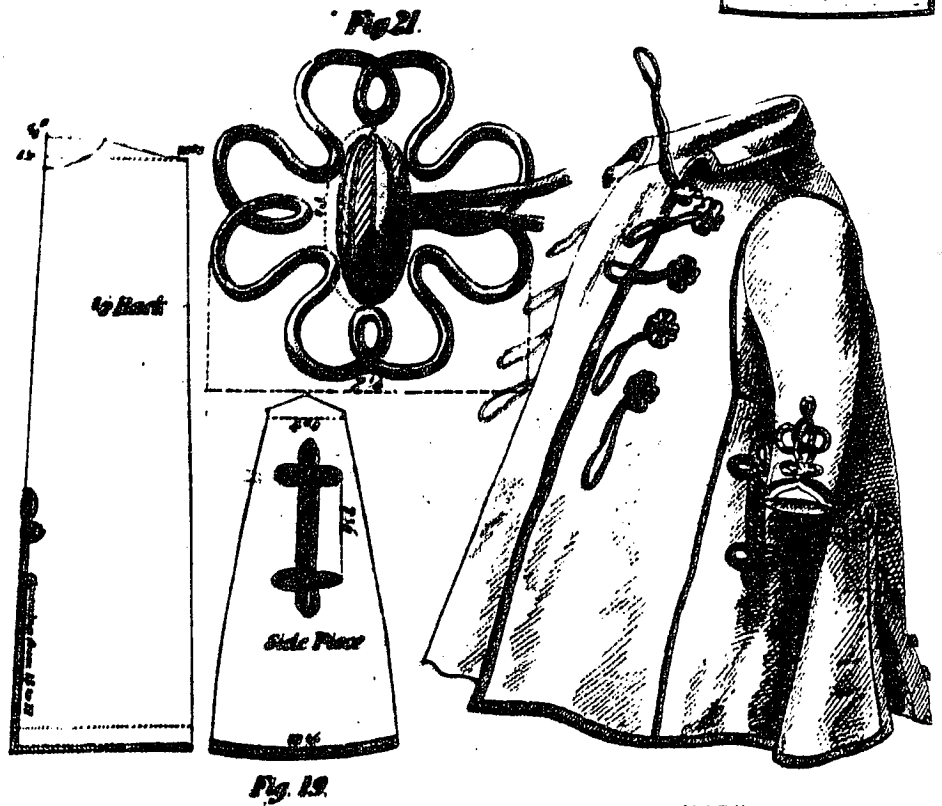
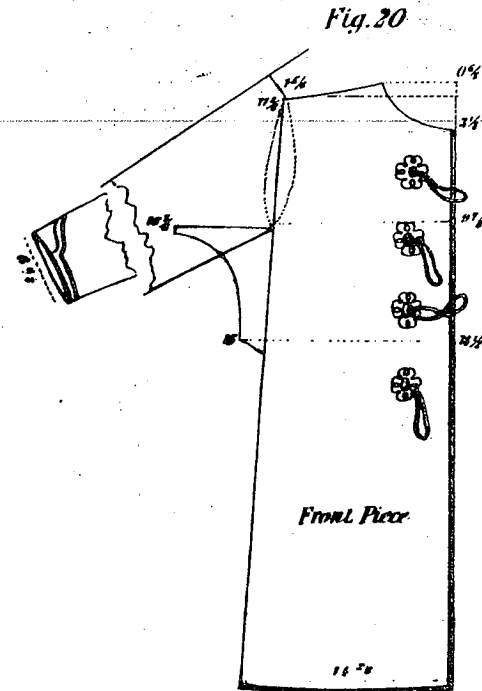
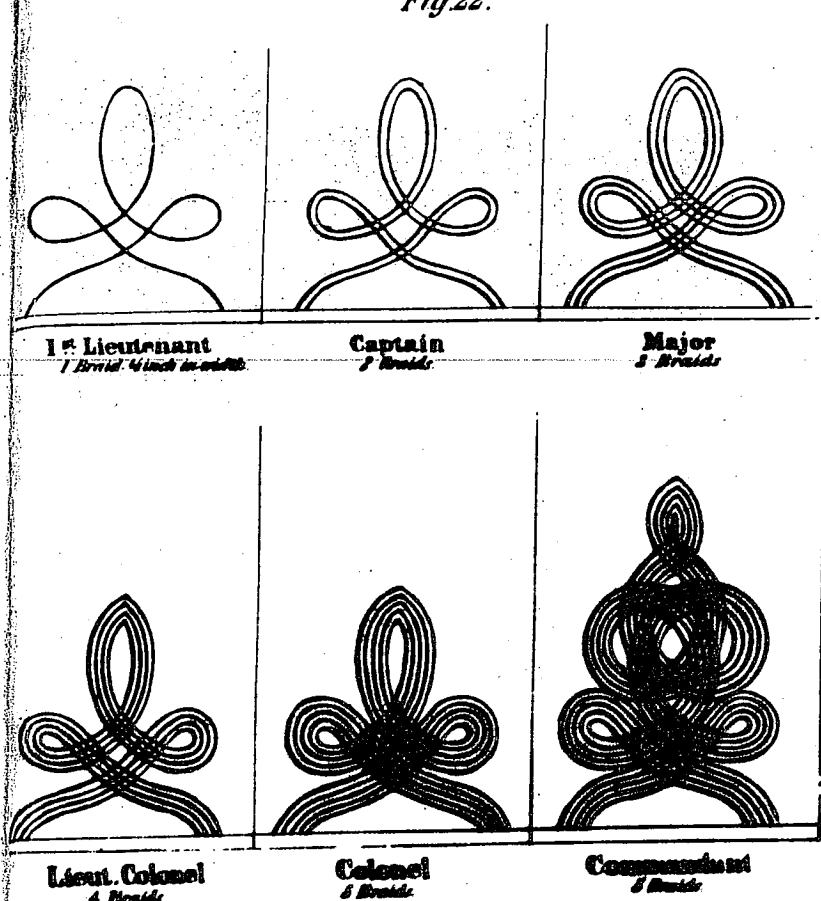
1st Lieutenant



2nd Lieutenant



Badges of rank,
with six sleeves of ornament.
Fig. 22.



Note:
The figures are in inches.
This drawing is for a coat for a man. 5'7".